

Venue Hire

Brisbane

superordinary.

superordinary.

Superordinary is a multi-arts space based in Northshore Brisbane.

We provide affordable space for artists to create work, show work and collaborate by reclaiming urban spaces.

Superordinary repurposes urban space for arts projects, events and artist development. In our most evocative project to date, we have commandeered a 1700 square metre industrial warehouse and matching outdoor courtyard to home a plethora of event spaces, galleries, kitchen, bar, markets, artist studios and pop-up installations. A hub, a melting pot, a boiling over, a home base, a launch pad.

Superordinary provides opportunities often unavailable to artists due to economic barriers of entry. As a melting pot of energy for multi-disciplinary collaboration, our artists in residence are provided with space, opportunity and encouragement to create and innovate within a like minded community. Our events programming supports the goals of Superordinary.



Venue Hire

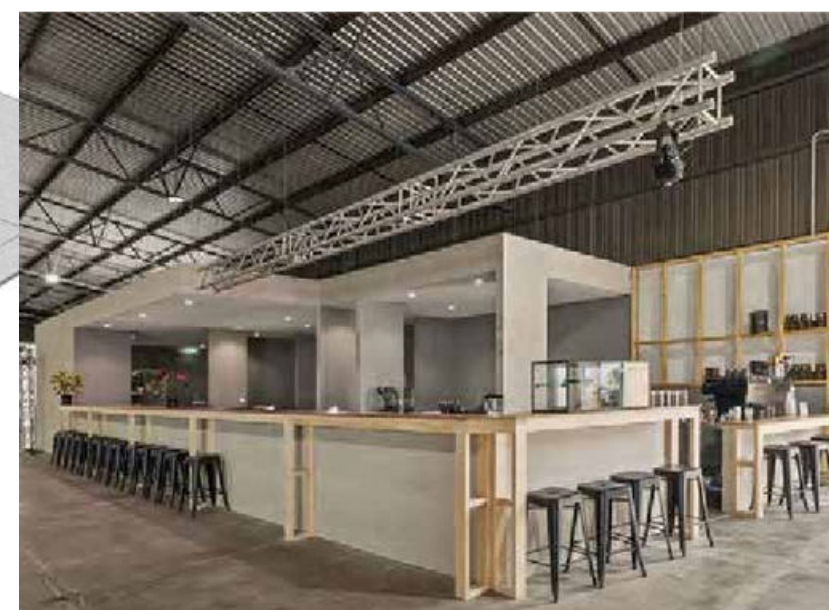
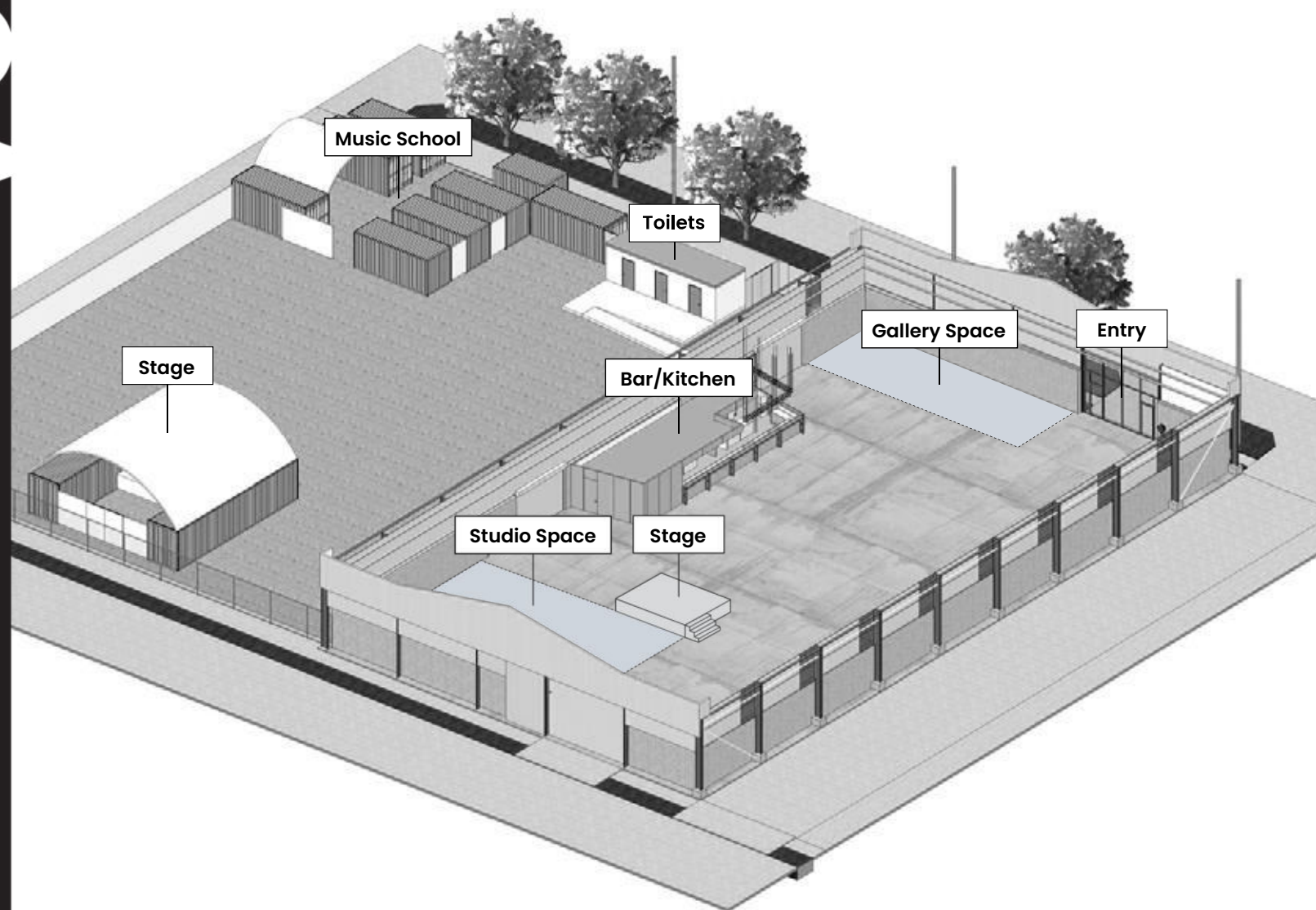
Along the river, on the Northside of Brisbane, Superordinary has created a space for art, community, and innovation. Known for our vibrant festivals, art exhibitions, workshops, and markets, we're extending our versatile space to anyone looking for a unique and adaptable space for their events.

Whether you envision an engaging seminar, an intimate exhibition, a bustling market, or an eclectic music festival, our venue can transform to fit your needs. Multiple layouts, arrangements, and custom setups are all possible, offering you an expansive palette for your event design.

While you're free to manage your event, we also offer complete logistical support for those who desire it, from staging to technical requirements and even curating a vibrant music and performance program from local artists.

Our unique warehouse and outdoor venue includes performance stages, gallery spaces, workshop areas, and market spaces, allowing for a wide variety of event types. We can host anything from small private parties to corporate events to large scale live music events.

If you are looking to make a booking or find out more information, please get in touch via hello@superordinary.com.au or fill out the event enquiry form [here](#).



Venue Hire

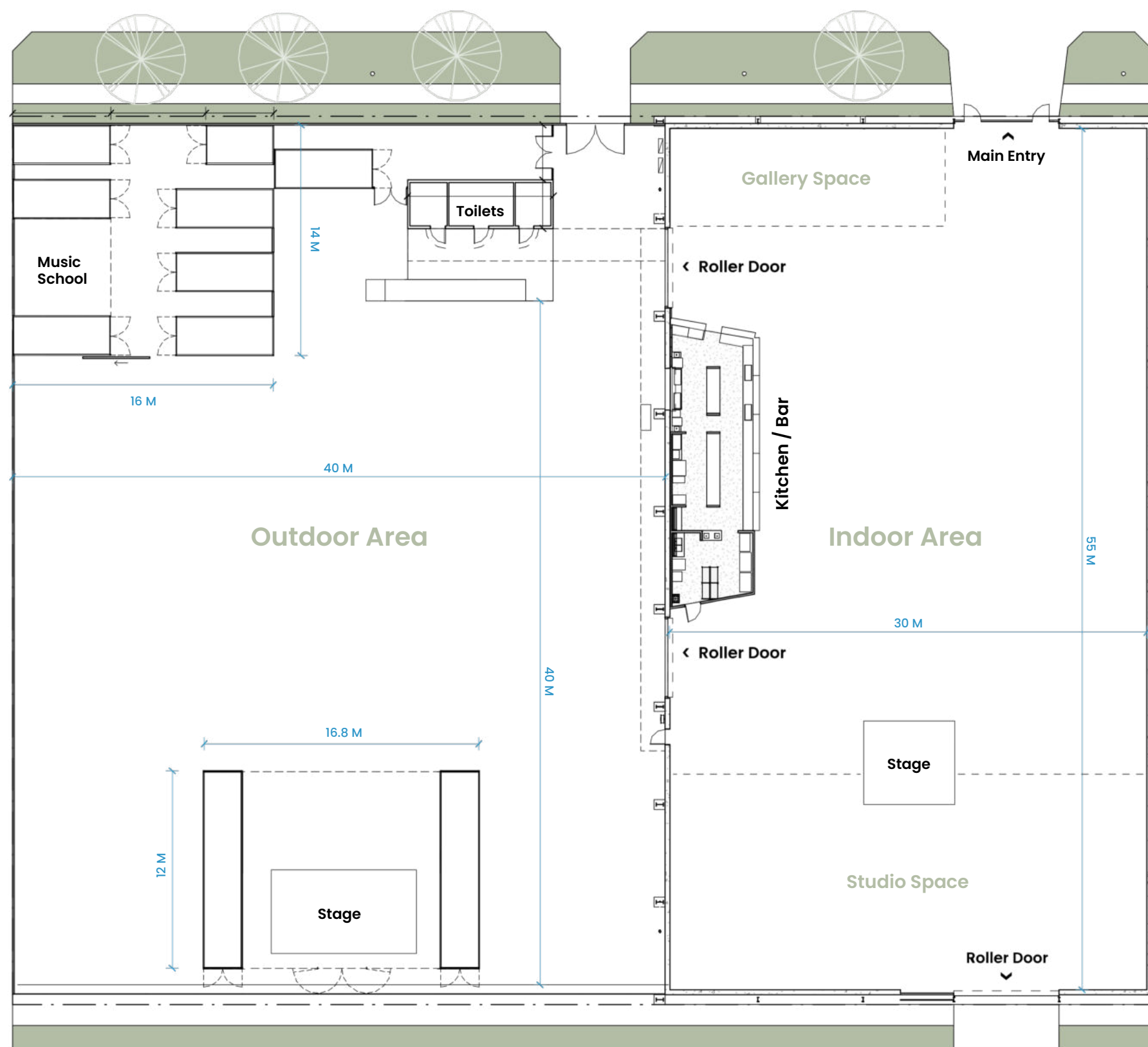
Floorplan

Indoor: 1700Sqm

Outdoor: 2200Sqm

Available to hire

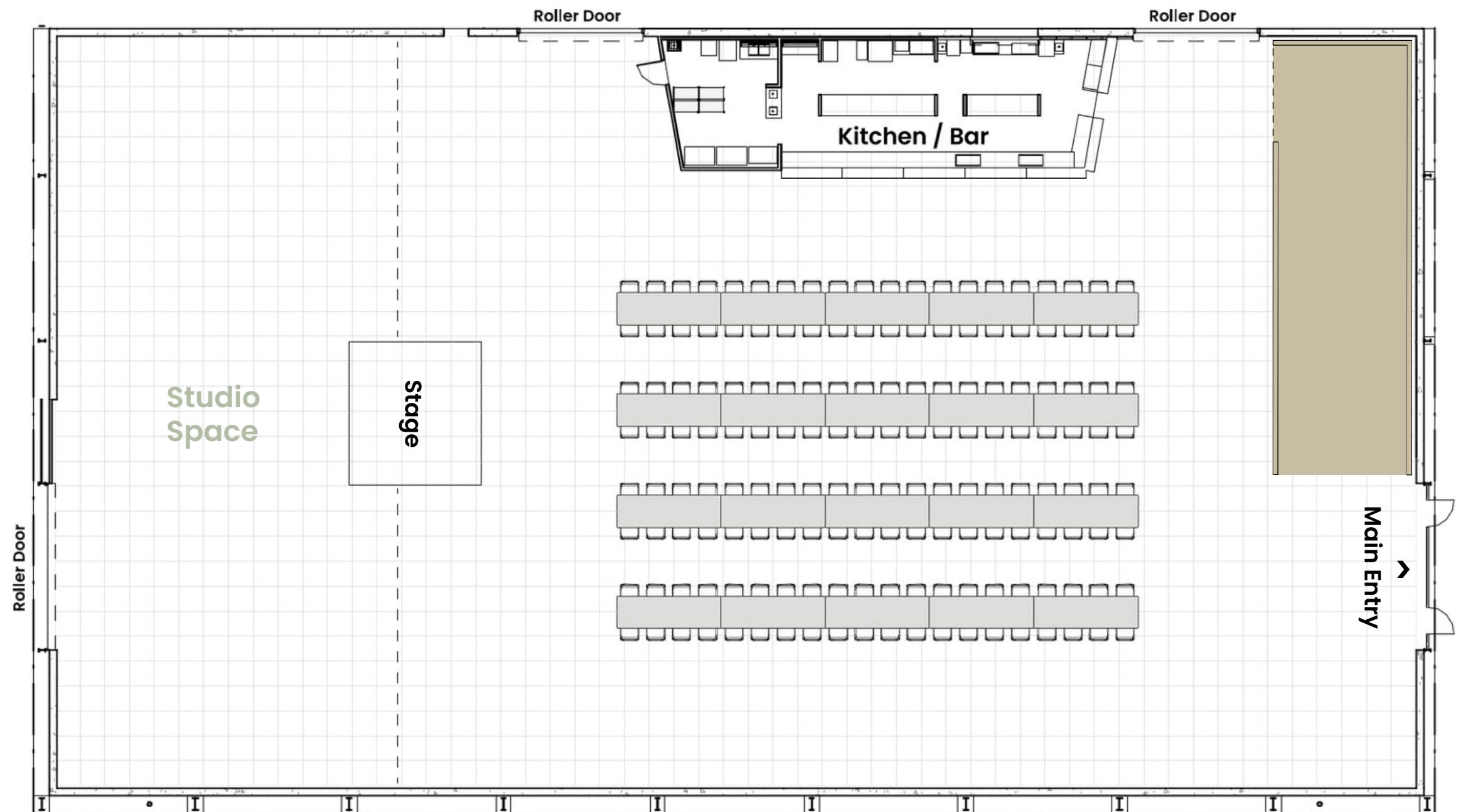
- Multi-Functional Space
- Full Service Support
- Licensed Bar
- Kitchen
- High Speed Wi-Fi
- Three Phase Power
- On-site Scissor Lift
- AV, Staging & Lighting
- Free Parking: 300+
- Accessible All Areas
- All Gender Toilets
- Indoor/Outdoor Stages



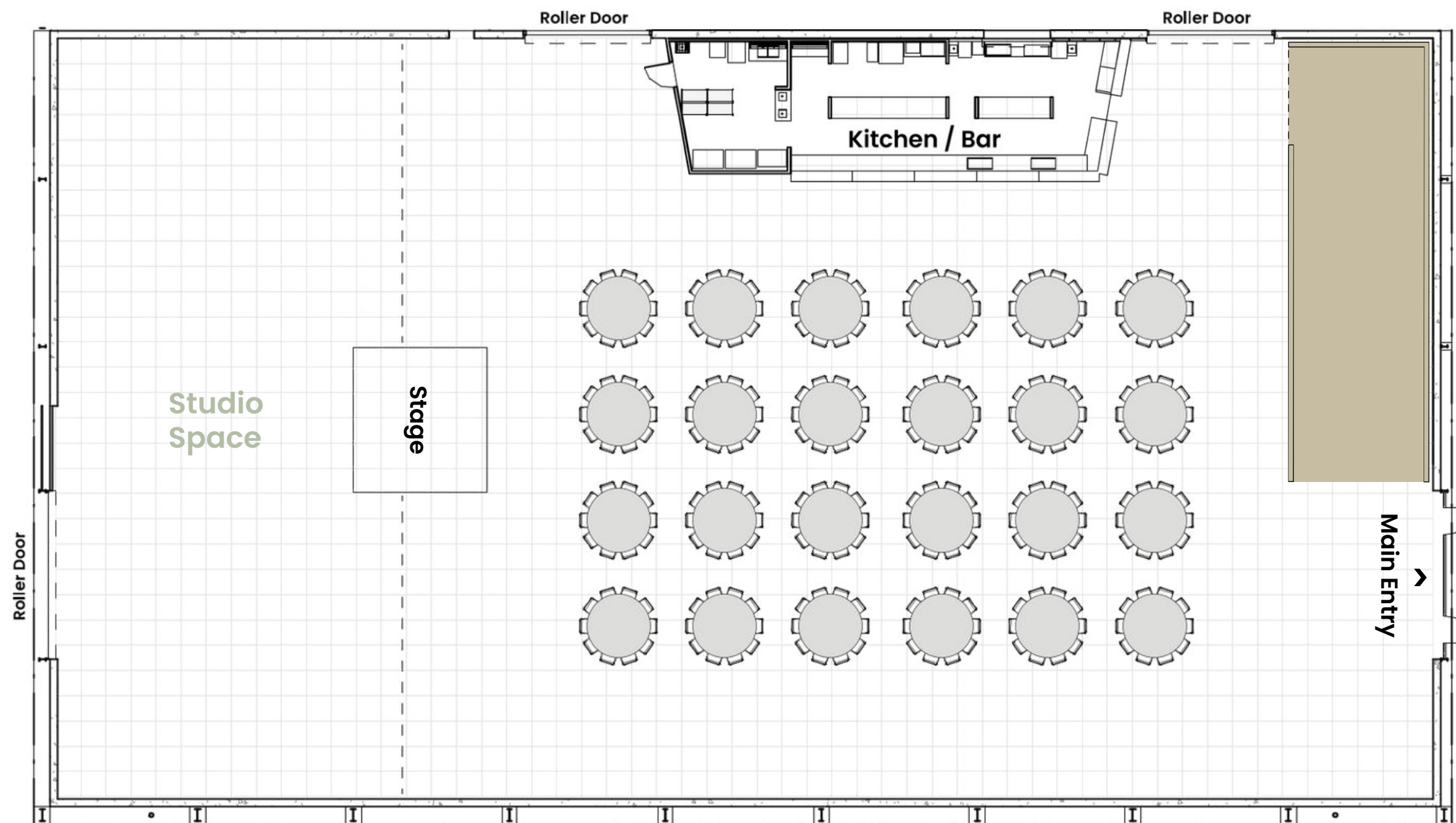
Venue Hire

Capacities

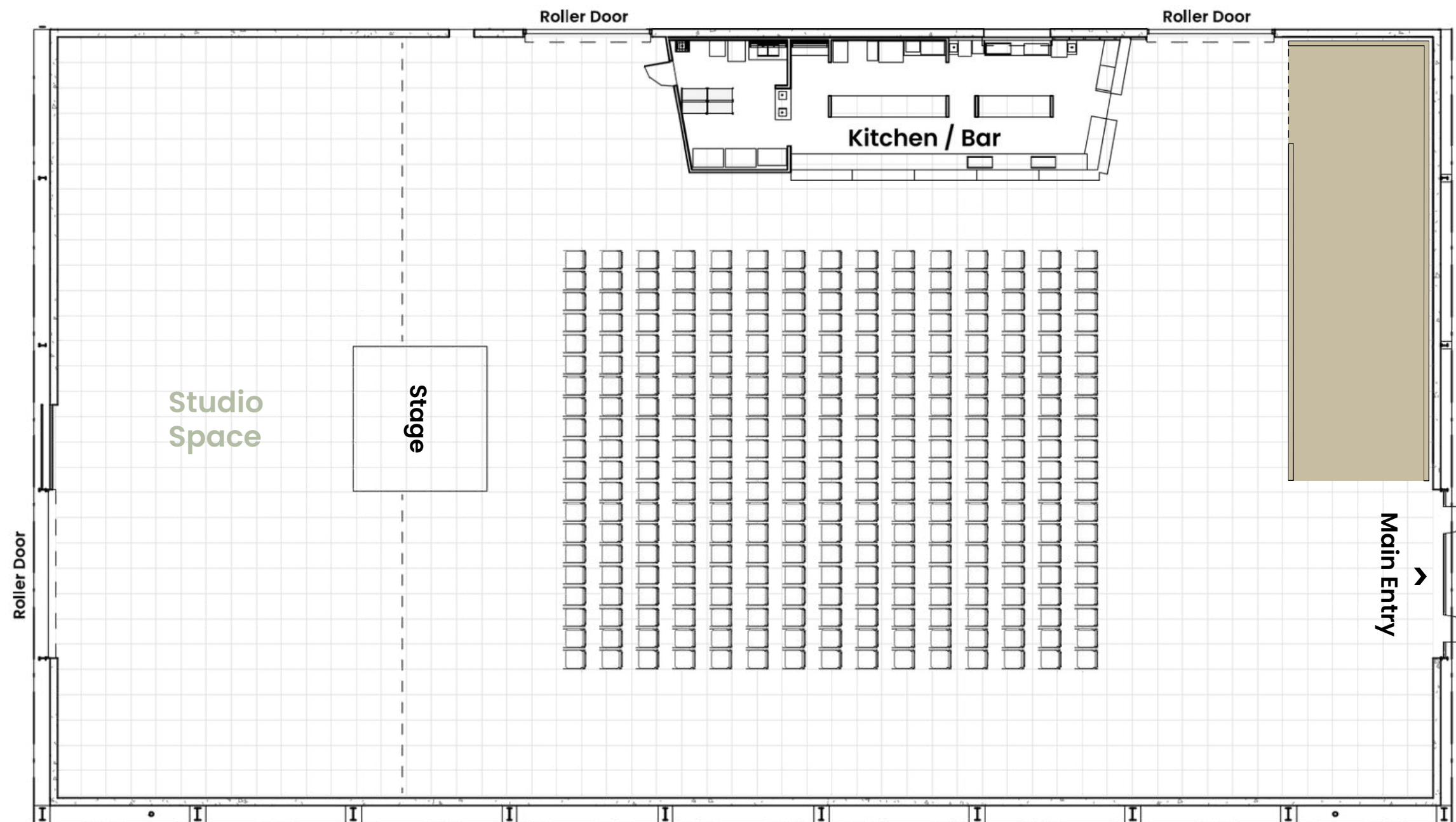




superordinary.



superordinary.

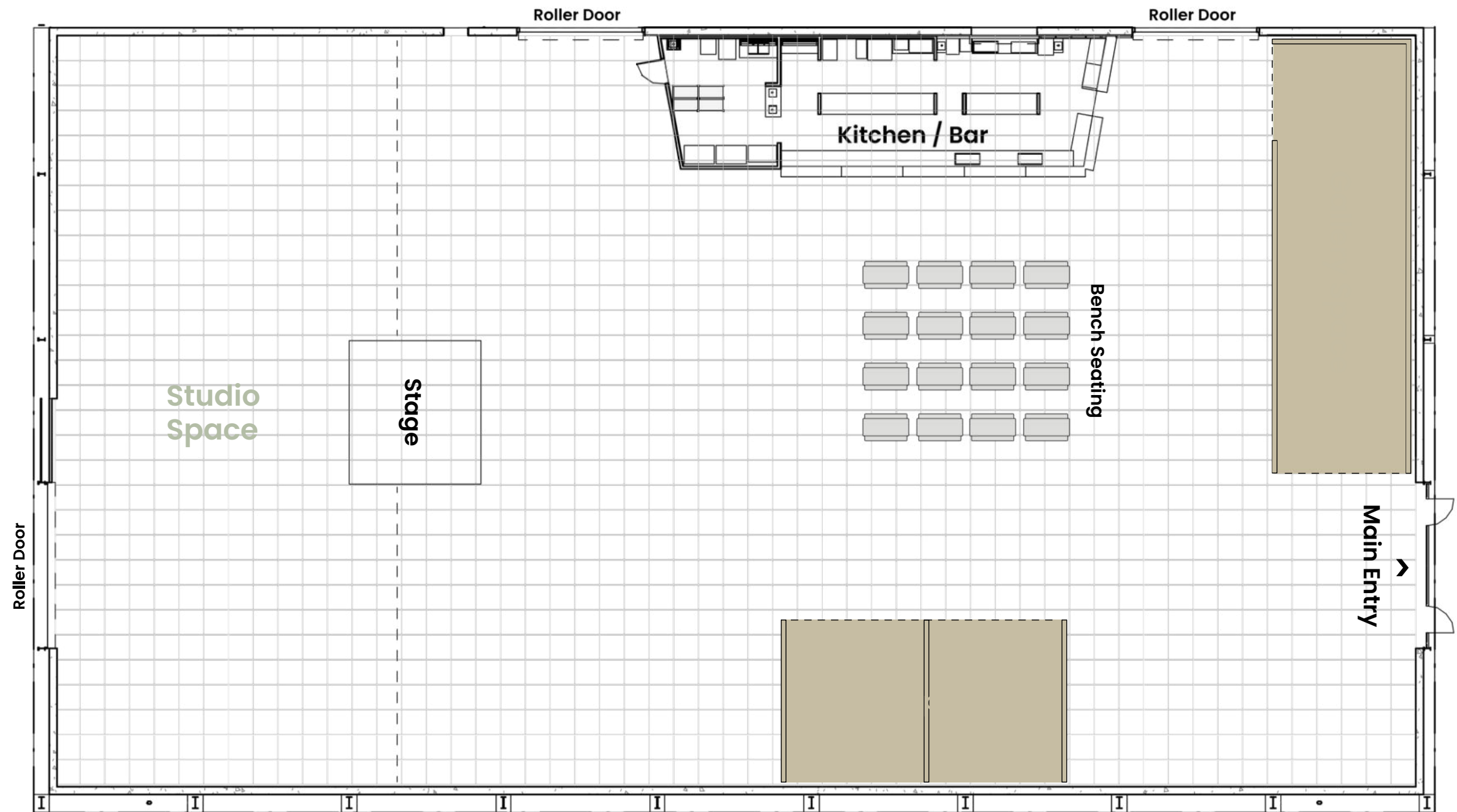


superordinary.



Example layout for ticketed and non-ticketed spaces operating concurrently within the venue

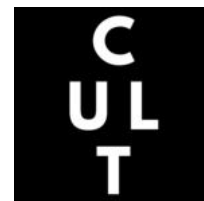
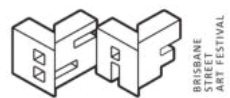
superordinary.



superordinary.

Venue Hire

We have hosted events for



BEC + BRIDGE

SECOND LIFE
MARKETS

FAQ

Parking

Directly adjacent to the venue is a large free carpark along with free street parking

Accessibility

Superordinary is an accessible venue to all areas, including a disabled access bathroom

Where is the venue located

Superordinary is located on the riverfront at Northshore Hamilton. A short drive, ferry, bus or uber from the Fortitude Valley and CBD.



Get in touch

superordinary.com.au
hello@superordinary.com.au

superordinary.